

Kiss from a rose

Seal

intro a capella

Gm F G

/ Gm F G

incl. flute

/ Gm F G

/ Gm F G

/ G / Eb7

There
There

used to be ..
is so much ..

F G G /

You
You

be came
re main

the
my

1. Eb7 F G G

light ..

Love

re.

/ F E D C B A G

main

Did you

S G Gm Eb F

know ..

my eyes ..

Eb F G /

Ba.

G / Eb7 F

by ..

Seal - Kiss from a rose

G / E^bΔ7 F

Oe, the more ..

G / E^bΔ7 F

now that your rose ..

E^bΔ7 F G /

2. E^bΔ7 F G /

po- wer my ..

E^bΔ7 F G /

won't you tell

E^bΔ7 F || E^bΔ7 F

⊕ 1st x instrum.
d. S'al-⊕
Did you

G / E^bΔ7 F

G / E^bΔ7 F

(now that your rose .. a)

1. E^bΔ7 F || F /

J've been

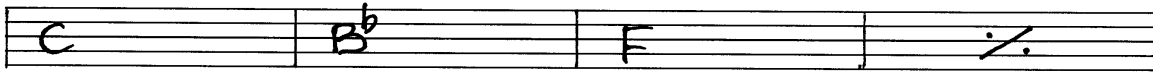
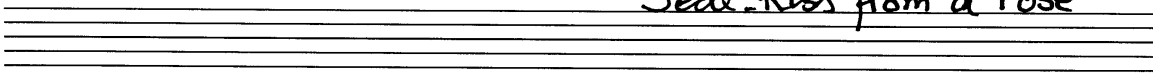
C B^b F /

kissed ..

C B^b F /

(3)

Seal - Kiss from a rose



There is so much ..

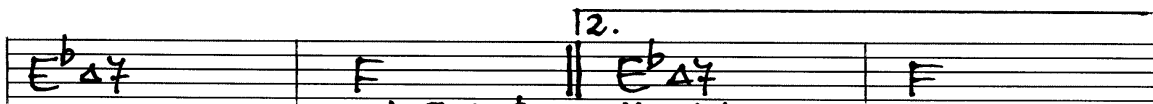


tell ..

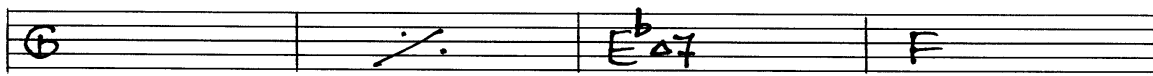
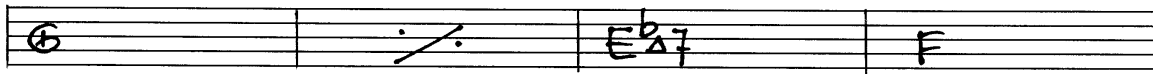
.. say you re-main my



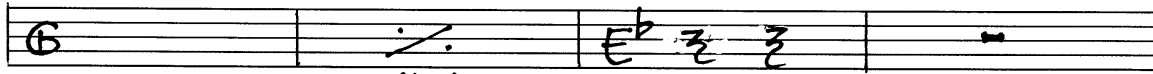
power ..



1. d. Sal Did you light hits ..

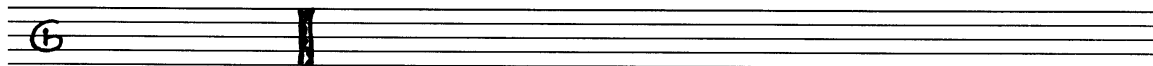


paja ja ..



now that your rose ..

∩



Arrangement: Accoriden.com

